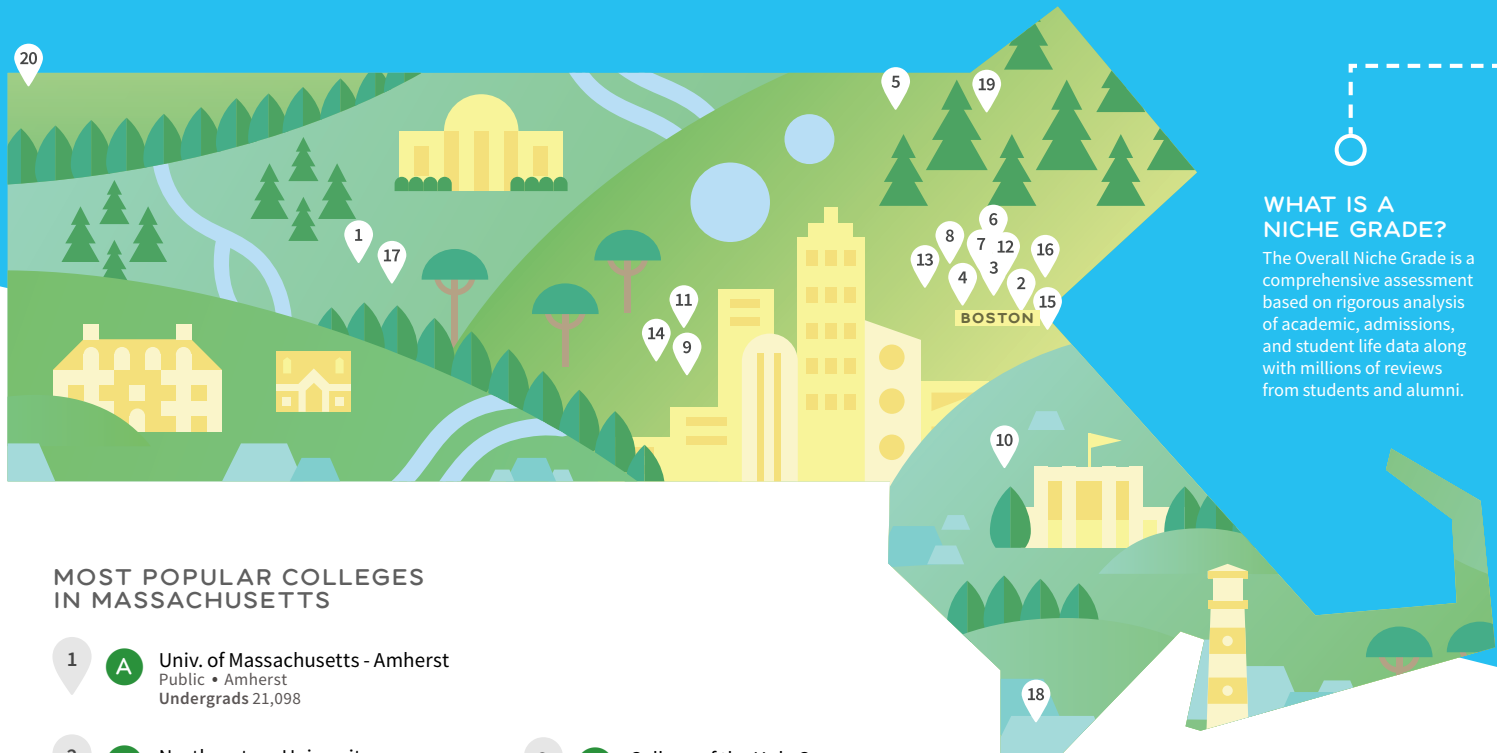


MASSACHUSETTS COLLEGE GUIDE

Niche has the most comprehensive data on U.S. colleges and universities. We analyze this data along with millions of reviews from students and alumni to help you understand what a college is really like.



WHAT IS A NICHE GRADE?

The Overall Niche Grade is a comprehensive assessment based on rigorous analysis of academic, admissions, and student life data along with millions of reviews from students and alumni.

MOST POPULAR COLLEGES IN MASSACHUSETTS

- | | | |
|--|---|---|
| 1 A Univ. of Massachusetts - Amherst
Public • Amherst
Undergrads 21,098 | 9 A+ College of the Holy Cross
Private • Worcester
Undergrads 2,698 | 16 B Suffolk University
Private • Boston
Undergrads 5,108 |
| 2 A+ Northeastern University
Private • Boston
Undergrads 13,664 | 10 A- Stonehill College
Private • Easton
Undergrads 2,376 | 17 A+ Amherst College
Private • Amherst
Undergrads 1,795 |
| 3 A+ Boston University
Private • Boston
Undergrads 16,585 | 11 A+ Worcester Polytechnic Institute
Private • Worcester
Undergrads 4,158 | 18 B- Univ. of Massachusetts - Dartmouth
Public • North Dartmouth
Undergrads 6,254 |
| 4 A+ Boston College
Private • Chestnut Hill
Undergrads 9,541 | 12 A+ Massachusetts Institute of Technology
Private • Cambridge
Undergrads 4,492 | 19 B Merrimack College
Private • North Andover
Undergrads 3,027 |
| 5 B+ Univ. of Massachusetts - Lowell
Public • Lowell
Undergrads 9,830 | 13 A Brandeis University
Private • Waltham
Undergrads 3,602 | 20 A+ Williams College
Private • Williamstown
Undergrads 2,083 |
| 6 A+ Tufts University
Private • Medford
Undergrads 5,215 | 14 A Clark University
Private • Worcester
Undergrads 2,227 | |
| 7 A+ Harvard University
Private • Cambridge
Undergrads 7,183 | 15 B Univ. of Massachusetts - Boston
Public • Boston
Undergrads 9,384 | |
| 8 A Bentley University
Private • Waltham
Undergrads 4,137 | | |

Most Popular Colleges In Massachusetts



College	Niche Report Card					Public/ Private	Undergrads	Net Price	Acceptance Rate	SAT Range	ACT Range	Student to Faculty	Grad. Rate	Most Popular Majors
	Overall	Academics	Value	Student Life	Diversity									
1 University of Massachusetts - Amherst	A	A	A	A	A-	Public	21,098	\$19,109	58%	1130-1310	25-30	18:1	78%	Psychology/Liberal Arts and Humanities, Economics, Communications, Biology
2 Northeastern University Boston	A+	A+	A+	A	A	Private	13,664	\$29,779	28%	1340-1510	31-34	14:1	84%	Business, Mechanical Engineering, Nursing, Economics, Research and Experimental Psychology
3 Boston University Boston	A+	A+	A	A	A	Private	16,585	\$32,732	33%	1200-1410	27-31	12:1	85%	Business Administration and Management, Communications, Psychology, Economics, International Relations and National Security Studies
4 Boston College Chestnut Hill	A+	A+	A+	A	A-	Private	9,541	\$26,284	29%	1260-1470	30-33	14:1	92%	Economics, Psychology, Finance, Communications, Biology
5 University of Massachusetts - Lowell Lowell	B+	A-	A	B	A-	Public	9,830	\$17,035	57%	1100-1300	23-29	17:1	56%	Business Administration and Management, Criminal Justice and Law Enforcement Administration, Information Studies, Psychology, Mechanical Engineering
6 Tufts University Medford	A+	A+	A+	A+	A	Private	5,215	\$26,976	16%	1370-1520	30-33	9:1	93%	Economics, International Relations and National Security Studies, Biology, Computer Science, Arts
7 Harvard University Cambridge	A+	A+	A+	A+	A	Private	7,183	\$15,742	6%	1400-1600	32-35	7:1	98%	Economics, Social Sciences, History, Political Science and Government, Mathematics & Statistics
8 Bentley University Waltham	A	A	A+	B+	A-	Private	4,137	\$33,133	42%	1140-1330	26-30	12:1	89%	Accounting, Finance, Business Support Services, Marketing, Liberal Arts and Humanities
9 College of the Holy Cross Worcester	A+	A+	A+	A	A-	Private	2,698	\$24,728	37%	1230-1370	29-33	10:1	92%	Economics, Psychology/Political Science and Government, English, History
10 Stonehill College Easton	A-	B+	A+	B	B	Private	2,376	\$29,370	75%	1030-1230	24-27	12:1	87%	Psychology, Biology, Communications, Criminology, Accounting
11 Worcester Polytechnic Institute Worcester	A+	A+	A+	B+	A-	Private	4,158	\$39,011	49%	1310-1480	27-32	13:1	85%	Mechanical Engineering, Electrical and Electronics Engineering, Computer Science, Chemical Engineering, Biomechanical Engineering
12 Massachusetts Institute of Technology Cambridge	A+	A+	A+	A+	A+	Private	4,492	\$21,691	8%	1430-1580	33-35	3:1	92%	Computer Science, Mechanical Engineering, Mathematics & Statistics, Physics, Chemical Engineering
13 Brandeis University Waltham	A	A+	A	B+	A+	Private	3,602	\$30,383	34%	1250-1470	29-32	10:1	86%	Business, Economics, Biology, Psychology, Public Policy, Analysis
14 Clark University Worcester	A	A	A-	B+	A	Private	2,227	\$25,982	57%	1188-1366	25-33	10:1	83%	Psychology, Business Administration and Management, Economics, Political Science and Government, Biology
15 University of Massachusetts - Boston Boston	B	B	B+	C	A	Public	9,384	\$10,980	69%	950-1160	No Data	16:1	42%	Business Administration and Management, Psychology, Nursing, Nursing Science, Education, and Practice, Biology
16 Suffolk University Boston	B	B-	B+	B-	A	Private	5,108	\$31,390	82%	910-1120	20-26	13:1	57%	Communications, Finance, Marketing, Business Administration and Management, Accounting
17 Amherst College Amherst	A+	A+	A+	B+	A+	Private	1,795	\$16,861	14%	1360-1553	31-34	8:1	95%	Economics, Mathematics & Statistics, Research and Experimental Psychology, English, Political Science and Government
18 University of Massachusetts - Dartmouth North Dartmouth	B-	B	B+	C-	A-	Public	6,254	\$15,489	76%	920-1130	19-25	18:1	46%	Nursing, Psychology, Accounting, Marketing, Criminology
19 Merrimack College North Andover	B	B	A	C+	A-	Private	3,027	\$31,355	79%	465-560	20-24	13:1	71%	Human Development, Marketing, Accounting, Business Administration and Management, Finance
20 Williams College Williamstown	A+	A+	A+	A-	A	Private	2,083	\$21,546	18%	1330-1550	31-34	7:1	96%	Economics, Mathematics & Statistics, Biology, Psychology, English

The Most Popular Colleges are the schools that receive the most views on Niche.com.

Niche Grades evaluate specific aspects of campus life based on rigorous data analysis along with millions of student reviews.

Public colleges receive state funding and offer in-state residents lower tuition. **Private colleges** don't distinguish between in-state and out-of-state.

Net Price is average cost after financial aid for students receiving grant or scholarship aid, as reported by the college.

Acceptance Rate is the percentage of students who apply to a college and are accepted.

A college's **SAT and ACT ranges** represent the test scores of the 25th and 75th percentile of students who are enrolled.

Student/Faculty Ratio is the number of students who attend a college divided by the number of faculty. A ratio of 10:1 indicates 10 students for every one faculty.

Graduation Rate is the percentage of undergraduate students who receive their degree within six years.

EXPLORE ALL COLLEGES AT
NICHE.COM/COLLEGES