

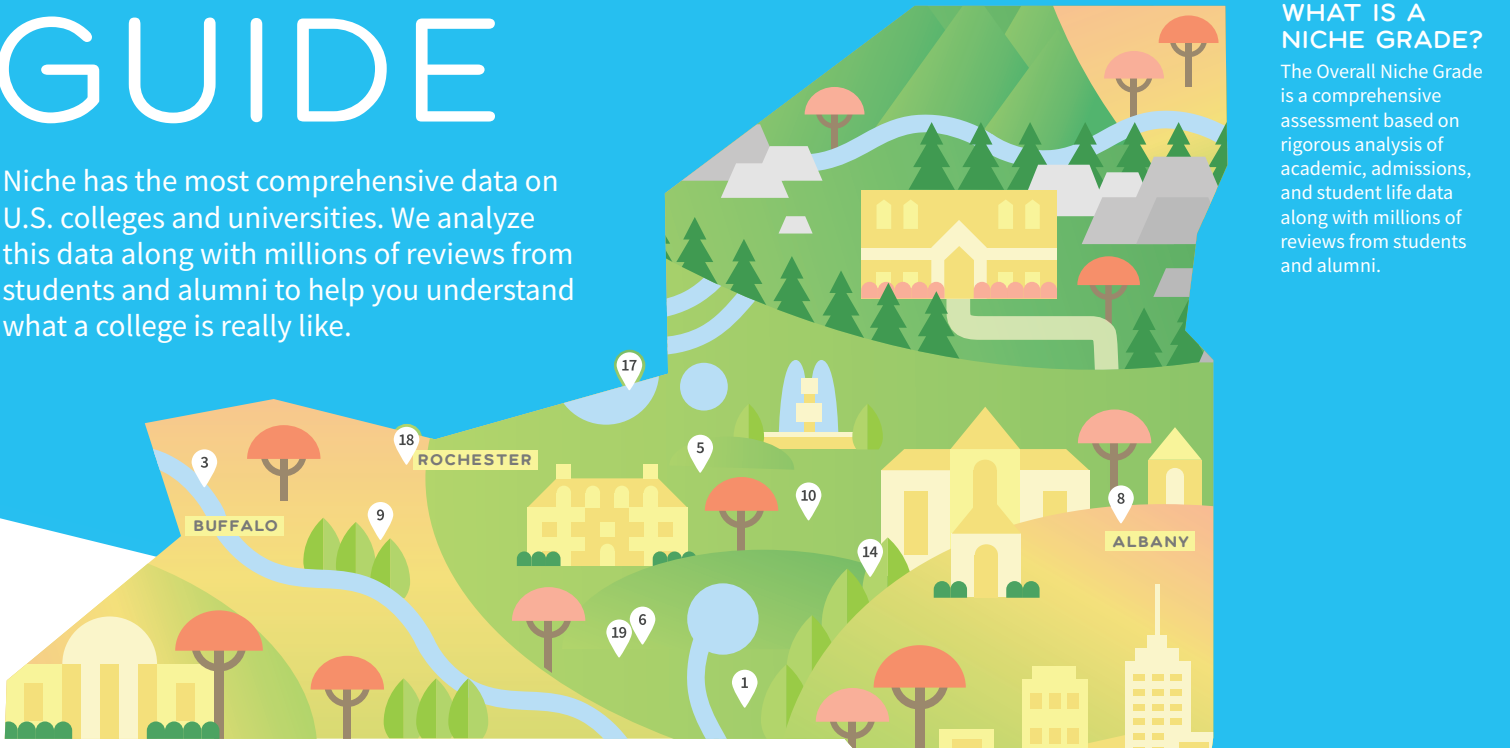


NEW YORK COLLEGE GUIDE

Niche has the most comprehensive data on U.S. colleges and universities. We analyze this data along with millions of reviews from students and alumni to help you understand what a college is really like.

WHAT IS A NICHE GRADE?

The Overall Niche Grade is a comprehensive assessment based on rigorous analysis of academic, admissions, and student life data along with millions of reviews from students and alumni.



MOST POPULAR COLLEGES IN NEW YORK

- 1 **A-** Binghamton Univ., SUNY
Public • Vestal
Undergrads 13,054
- 2 **A-** Stony Brook Univ., SUNY
Public • Stony Brook
Undergrads 15,714
- 3 **A-** Univ. at Buffalo, SUNY
Public • Buffalo
Undergrads 18,452
- 4 **A+** New York University
Private • New York
Undergrads 24,480
- 5 **A** Syracuse University
Private • Syracuse
Undergrads 14,566
- 6 **A+** Cornell University
Private • Ithaca
Undergrads 14,303
- 7 **A+** Columbia University
Private • New York
Undergrads 7,523
- 8 **B+** Univ. at Albany, SUNY
Public • Albany
Undergrads 12,223
- 9 **B+** SUNY Geneseo
Public • Geneseo
Undergrads 5,470
- 10 **A+** Colgate University
Private • Hamilton
Undergrads 2,834
- 11 **B** SUNY New Paltz
Public • New Paltz
Undergrads 6,165
- 12 **A-** Fordham University
Private • Bronx
Undergrads 8,329
- 13 **B** CUNY Hunter College
Public • New York
Undergrads 12,033
- 14 **B** SUNY College at Oneonta
Public • Oneonta
Undergrads 5,754
- 15 **A-** CUNY Baruch College
Public • New York
Undergrads 11,233
- 16 **B+** CUNY City College of New York
Public • New York
Undergrads 9,734
- 17 **B** SUNY Oswego
Public • Oswego
Undergrads 6,778
- 18 **A+** University of Rochester
Private • Rochester
Undergrads 6,046
- 19 **A-** Ithaca College
Private • Ithaca
Undergrads 6,206
- 20 **B** St. John's Univ. - New York
Private • Queens
Undergrads 11,047

Most Popular Colleges In New York



College | Overall | Academics | Value | Student Life | Diversity

Niche Report Card | Public/Private | Undergrads | Net Price | Acceptance Rate | SAT Range | ACT Range | Student to Faculty | Grad. Rate | Most Popular Majors

| | | | | | | | | | | | | | | | |
|----|--|----|----|----|----|----|---------|--------|----------|-----|-----------|-------|------|-----|--|
| 1 | Binghamton University, SUNY Vestal | A- | A | A | B+ | A | Public | 13,054 | \$16,081 | 42% | 1230-1383 | 27-31 | 20:1 | 81% | Economics, Psychology, Accounting, Biology, English |
| 2 | Stony Brook University, SUNY Stony Brook | A- | A | A | C+ | A | Public | 15,714 | \$13,503 | 41% | 1150-1380 | 26-31 | 17:1 | 68% | Health Service Preparatory Studies, Psychology, Biology, Business Administration and Management, Computational and Applied Mathematics |
| 3 | University at Buffalo, SUNY Buffalo | A- | A- | A | A- | A | Public | 18,452 | \$15,306 | 60% | 1060-1260 | 24-29 | 13:1 | 74% | Business Administration and Management, Psychology, Communications, Social Sciences, Biology |
| 4 | New York University New York | A+ | A+ | A | A | A+ | Private | 24,480 | \$35,106 | 32% | 1250-1470 | 29-32 | 10:1 | 84% | Liberal Arts and Humanities, Business, Economics, Psychology, Nursing |
| 5 | Syracuse University Syracuse | A | A | A | A | A | Private | 14,566 | \$30,727 | 48% | 1090-1290 | 24-29 | 16:1 | 81% | Psychology, Information Studies, Finance, Economics, Journalism |
| 6 | Cornell University Ithaca | A+ | A+ | A+ | A | A | Private | 14,303 | \$28,656 | 15% | 1330-1530 | 30-34 | 9:1 | 93% | Biology, Labor and Industrial Relations, Hotel and Resort Management, Computer Science, Economics |
| 7 | Columbia University New York | A+ | A+ | A+ | A+ | A+ | Private | 7,523 | \$17,678 | 7% | 1380-1570 | 31-35 | 6:1 | 95% | Economics, Political Science and Government, Nursing, Computer Science, Research and Experimental Psychology |
| 8 | University at Albany, SUNY Albany | B+ | B+ | A | B | A | Public | 12,223 | \$14,226 | 56% | 1000-1170 | 22-26 | 18:1 | 68% | Psychology, Biology, Sociology, Economics, Business Administration and Management |
| 9 | SUNY Geneseo Geneseo | B+ | B+ | A | B+ | B | Public | 5,470 | \$16,271 | 73% | 1100-1290 | 25-29 | 20:1 | 82% | Psychology, Biology, Business Administration and Management, Communications, Mathematics & Statistics |
| 10 | Colgate University Hamilton | A+ | A+ | A+ | A | A- | Private | 2,834 | \$21,741 | 27% | 1250-1450 | 30-33 | 9:1 | 90% | Economics, Political Science and Government, International Relations and National Security Studies, English, Psychology |
| 11 | SUNY New Paltz New Paltz | B | B+ | A- | B | B+ | Public | 6,165 | \$13,813 | 42% | 1025-1210 | 23-27 | 15:1 | 73% | Psychology, English, Sociology, Communications, Elementary Education |
| 12 | Fordham University Bronx | A- | A | A- | B- | A | Private | 8,329 | \$35,912 | 48% | 1170-1350 | 27-31 | 14:1 | 81% | Communications, Business Administration and Management, Psychology, Finance, Economics |
| 13 | CUNY Hunter College New York | B | A- | B+ | C | A- | Public | 12,033 | \$10,944 | 39% | 1070-1260 | 25-31 | 11:1 | 54% | Psychology, English, Sociology, Nursing, Chemistry |
| 14 | SUNY College at Oneonta Oneonta | B | B | A- | B | B | Public | 5,754 | \$15,401 | 49% | 1000-1170 | 22-25 | 18:1 | 72% | Communications, Psychology, Managerial Economics, Biology, Elementary Education |
| 15 | CUNY Baruch College New York | A- | A- | A | B+ | A | Public | 11,233 | \$9,116 | 32% | 1140-1320 | 27-33 | 17:1 | 70% | Finance, Accounting, Merchandising and Buying Operations, Corporate Communication, Business Administration and Management |
| 16 | CUNY City College of New York New York | B+ | A- | A- | C | A- | Public | 9,734 | \$7,696 | 43% | 1000-1250 | 25-33 | 12:1 | 44% | Psychology, English, Liberal Arts and Humanities, Biology, Studio Arts |
| 17 | SUNY Oswego Oswego | B | B+ | B+ | B- | B+ | Public | 6,778 | \$16,021 | 51% | 1010-1190 | 22-26 | 17:1 | 66% | Business Administration and Management, Psychology, Radio, Television, and Digital Communication, Criminal Justice and Safety Studies, Parks, Recreation and Leisure Studies |
| 18 | University of Rochester Rochester | A+ | A+ | A+ | B+ | A | Private | 6,046 | \$33,682 | 34% | 1250-1450 | 28-32 | 10:1 | 88% | Nursing, Biology, Economics, Psychology, Music Performance |
| 19 | Ithaca College Ithaca | A- | A- | A- | A- | A- | Private | 6,206 | \$34,893 | 67% | 1590-1880 | 23-28 | 11:1 | 76% | Business Administration and Management, Radio, Television, and Digital Communication, Public Relations, Cinematography and Video Production, Physical Therapy |
| 20 | St. John's University - New York Queens | B | B | A- | B | A | Private | 11,047 | \$27,390 | 65% | 960-1180 | 22-27 | 17:1 | 58% | Communications, Biology, Accounting, Psychology, Business Administration and Management |

The Most Popular Colleges are the schools that receive the most views on Niche.com.

Niche Grades evaluate specific aspects of campus life based on rigorous data analysis along with millions of student reviews.

Public colleges receive state funding and offer in-state residents lower tuition. **Private colleges** don't distinguish between in-state and out-of-state.

Net Price is average cost after financial aid for students receiving grant or scholarship aid, as reported by the college.

Acceptance Rate is the percentage of students who apply to a college and are accepted.

A college's **SAT and ACT scores** represent the test ranges of the 25th and 75th percentile of students who are enrolled.

Student Faculty Ratio is the number of students who attend a college divided by the number of faculty. A ratio of 10:1 indicates 10 students for every one faculty.

Graduation Rate is the percentage of undergraduate students who receive their degree within six years.

EXPLORE ALL COLLEGES AT
NICHE.COM/COLLEGES